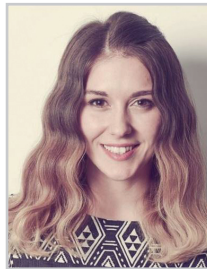


## What is NIIED GKS-KGSP?

The KGSP (Korean Government Scholarship Program) is a scholarship program sponsored by the NIIED (National Institute for International Education) and designed to provide higher education in Korea for international students in the aim of promoting international exchange in education and mutual friendship amongst the participating countries.

Benefits	Full tuition, monthly stipend, round-trip airfare
Program Duration	<b>Total 3 years:</b> - First year: Korean language training - Second & Third year: Master's program
Qualification	- Hold a bachelor's or an equivalent degree prior to August 31 <sup>st</sup> , 2017 - Have a GPA higher than B or 80% from the previously attended institution - Be non-Korean citizens whose parents are also non-Korean citizens. - Be physically and mentally healthy - Be under 40 years of age as of September 1 <sup>st</sup> , 2017

## My KDI School Experience



**Anna Lalova** (2015 MPP Student, Bulgaria)

Thanks to KDI School, my ambition for empirical researches on education has been enhanced. KDI School also offered me the opportunity to volunteer at Sejong City Hall. I gained unique experience in communicating with Sejong Administrative City citizens, promoted my culture and created bridges with this wonderful city. KDIS has given me one of the most precious things in my life - my international family from all over the world! I am a KDIS student, and I am proud of it.



**Emmanuel Ekanem** (2014 MDP Alumni, Head at TELLA, Nigeria)

KDI School and NIIED gave me the privilege to improve and build my capacity. After completing my KDI School coursework in 2016, I was immediately offered the job of the Head of Overseas Management at TELLA, a Korean education firm. My knowledge of the Korean language has helped me to adjust comfortably to life after school in Korea.

The blessing of cultural diversity and out of class capacity building programs which KDI School offered me has also given me the ability to manage effectively and efficiently.

This is why I cannot stop recommending my beloved alma mater to you.

KDI School is not just a school, but is a family of brilliant minds.

## How to Apply?

Applicants should apply via either a designated university or a designated embassy as indicated in 2017 NIIED GKS-KGSP Application Guideline.

Please download the **application guideline** from KDI School's admissions website <<http://admissions.kdischool.ac.kr>>.

### Apply via KDI School

**Application Deadline: March 20<sup>th</sup>, 2017**

#### Application Submission

- 1) Prepare application documents as instructed in the application guideline.  
 ※ *Incomplete applications will not be submitted for evaluation.*
- 2) Submit required documents to the admissions office by the deadline.  
 ※ *Address: 263 Namsejong-ro, Sejong-si, 30149, Republic of Korea*
- 3) Submit an online application through the KDI School's admissions website.  
 ※ *<https://apply.kdischool.ac.kr/>*

**Final Result: Late June, 2017**

### Apply via Korean Embassy

**Application Deadline: TBA by each embassy**

#### Application Submission

- 1) Prepare application documents as instructed in the application guideline.
- 2) Submit required documents to designated Korean embassy.

**Final Result: Late June, 2017**

※ *Each designated embassy has a different application process and applicants applying via embassy must check with the embassy first.*

## Contact Information

**Address** (Application Submission)

The Office of Admissions KDI School of Public Policy and Management  
 263 Namsejong-ro, Sejong-si, 30149, Republic of Korea

**Phone**

+82-44-550-1281(1220)

**E-mail**

internationaladmissions@kdis.ac.kr

**Office Hour**

9:00~18:00, KST

**Website**

<http://admissions.kdischool.ac.kr/>

# 2017 NIIED GKS-KGSP Korean Government Scholarship Program



KDI School of Public Policy and Management





## WHY KDI School?



### 1. Premier Education



Dynamic and vibrant education program delving into the experiences and the assets of **Asia's top think-tank, Korea Development Institute**

- Think tank rankings of KDI: 1<sup>st</sup> in Asia, 9<sup>th</sup> among non-US institutes (2014 Global Go To Think Tank Rankings, Univ. of Pennsylvania)



#### NASPAA\* Accreditation Received

\*Network of Schools of Public Policy, Affairs and Administration

- KDI School is the first school outside the United States to receive the NASPAA (the leading accreditation body for schools in public affairs) accreditation in MPP

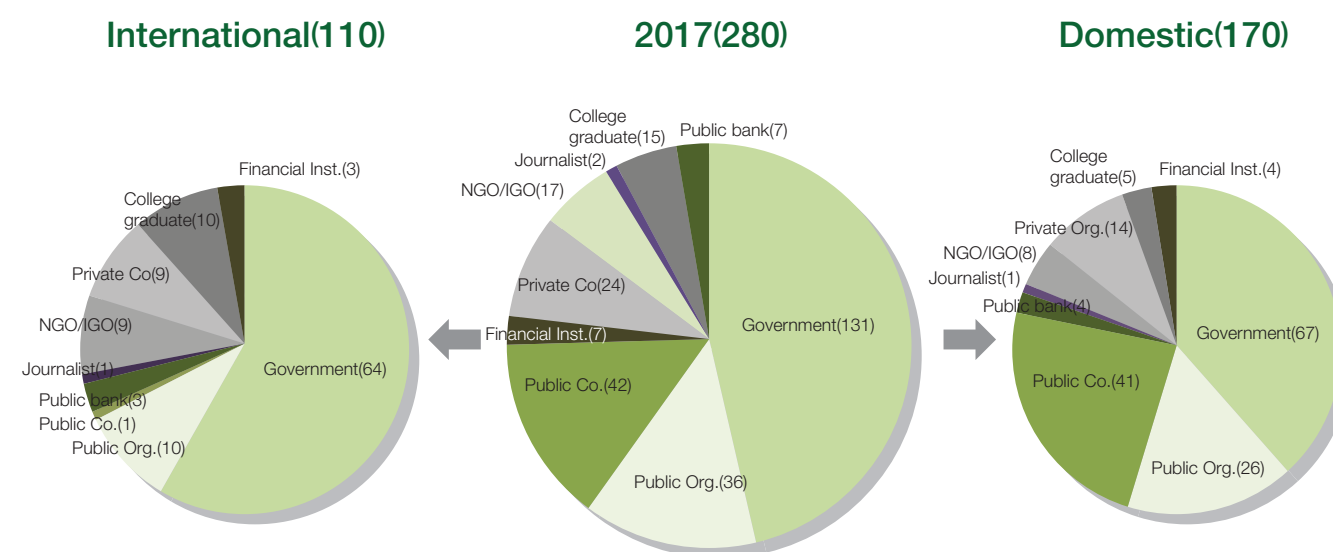
### 2. Top-Notch Faculty

- Faculty consisting of **Ph.D.'s from top-tier universities** in the world such as Harvard, MIT and Cornell
- Faculty members with **professional experience at policy-related institutions** such as KDI, World Bank, Bank of Korea, etc.
- Multi-national diversity**, including faculties with academic/professional background from the US, UK, Canada, Greece, Uzbekistan, Singapore, Hong Kong etc.



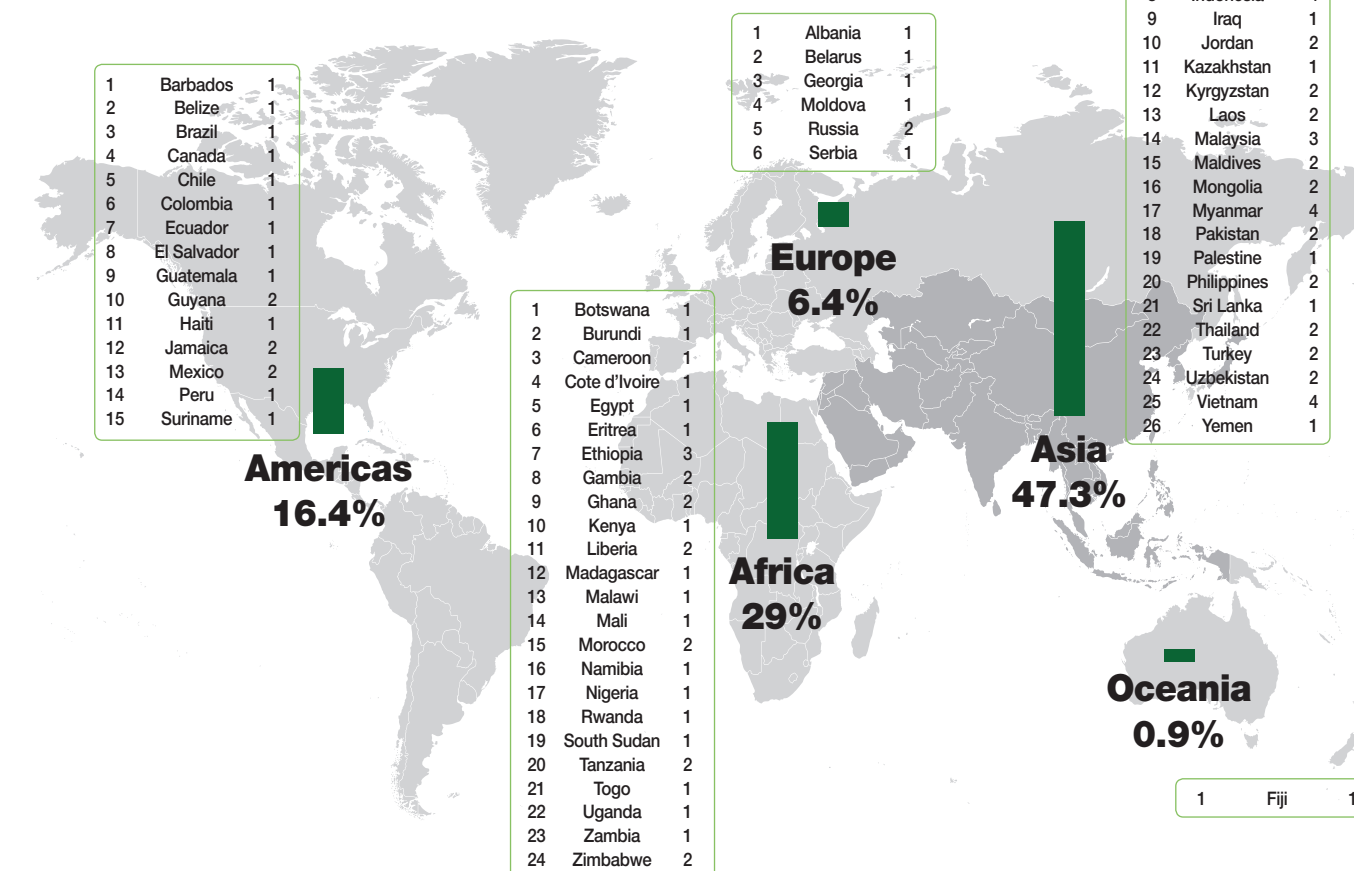
### 3. Diverse Student Body

- Truly international environment with international students representing over 50% of the student body
- International students from more than 70 countries around the world, creating a unique multi-cultural environment every year



### 4. Globe-spanning Alumni Network (1998-2016)

Over 1,500 international alumni from 119 countries serving as global leaders all over the world



## Academic Programs

#### MPP (Master of Public Policy)

Designed to provide a global perspective and professional expertise in public policy

#### MPM (Master of Public Management)

Designed to cover various facets of management and leadership in the public and private sectors

#### MDP (Master of Development Policy)

Designed to examine various socio-economic issues in both the theoretical and the practical framework

## Study Areas

#### Public Policy

Finance and Macroeconomic Policy  
Trade and Industry Policy  
Public Finance and Social Policy  
Regional Development and Environment

#### Development Policy

International Development  
Sustainable Development

Public Administration and Leadership  
Strategic Management  
Global Governance and Political Economy

#### Public Management

